

Some Gekkotruck styles

MAN KAT (8x8) – 'Krug'



Unimog – 'Homely'



Scania – 'Utilitarian'



Unimog – 'Ikea'



MB Vario 814 4x4 – 'Individualist'



Saurer – 'swiss simplicity'



Unimog – 'polish office'



Atego – 'nut wood'



MB Atego – 'cherry wood'



Zil – 'real wood / boat style'



Toyota Hilux – 'real wood laminate'



Iveco Daily– 'techno -compact'



MB Sprinter – 'campervan !'



Merc 1 – 'indian 4 star hotel'



Iveco Daily – 'Unicat white'



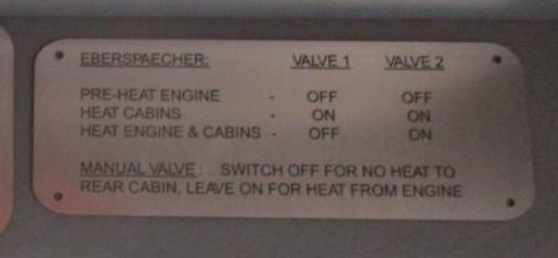
Various



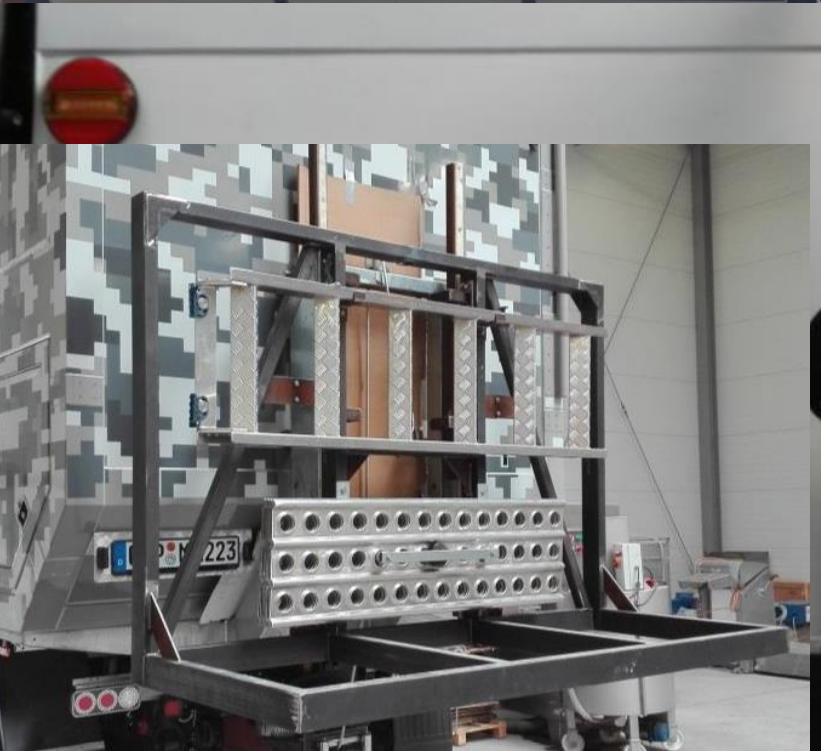
Storage & entrance steps



Electrics



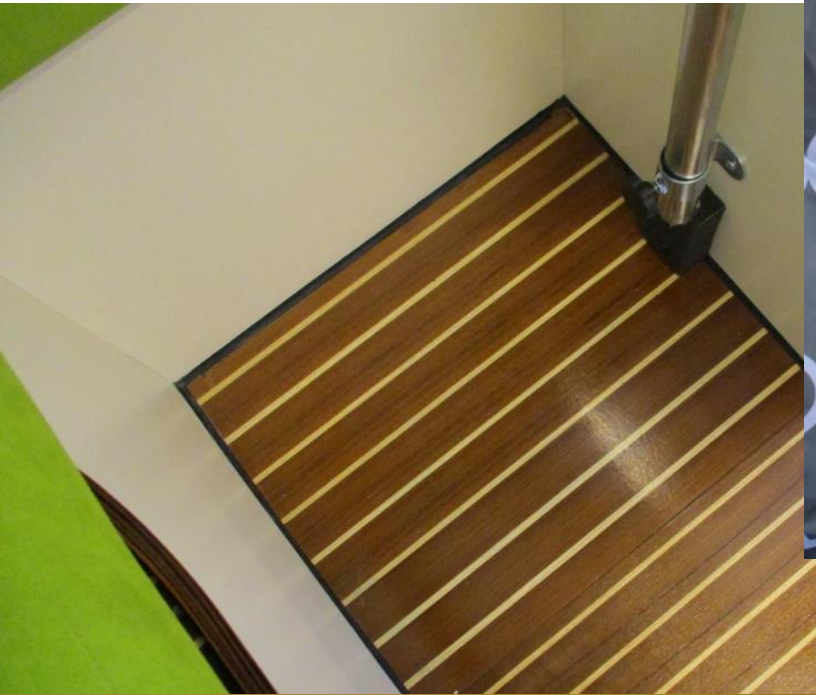
Wheel/motorbike Carriers



Components



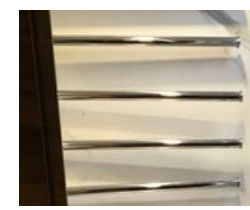
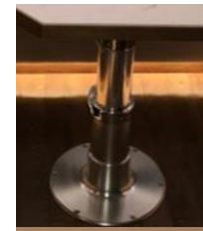
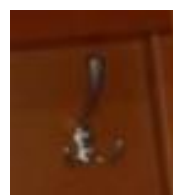
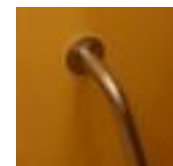
Components



Fittings

- Hooks
- Handles & Knobs
- Locks
- Sockets
- Edging
- Grilles & ventilation
- Monitoring
- Table legs
- LED strips
- LED lights
- Bedside lights
- Floor/highlighting-mood lighting
- Rollers
- Flooring
- Fans
- Taps & Basins
- Etc.....

Fittings



Our approach to electrics – Main ‘active’ components



Main ‘active’ electrical components (Chargers, inverters, solar and wind regulators, DC-DC converters, AC-AC converters etc.) are located usually under the main bed OR under the sofa/main seating areas, located also with fuseboxes – Batteries are usually placed close-by, but depends on number, layout, and weight distribution for good axle weight distribution



Our approach to electrics – fusebox, relays etc.



Fuseboxes, relays, re-sets etc. These components are most normally located adjacent to the main electrical active components, but may be distributed in additional locations, especially if larger driver cabins are installed with additional heating, cooling and/or LED external light (etc.) 'switched



Our approach to electrics – monitoring & control (1 of 2)



Additional component switches (various functions, such as washing machine specific water pump, external winch voltage re-set, 24v socket 'on', additional heating water pump etc.)



Water/cabin heating control & monitors (vary by heating manufacturer, i.e. Truma, Webasto, Eberspaecher etc.)



Votronic - combined 'control & monitor panel' for battery voltages, water pump switch, water tank volumes, plus additional matching gauges (various functions)

Our approach to electrics – monitoring & control (2 of 2)



Victron specific controls
(various functions, such as battery monitor, solar charging monitor, inverter-charger, control / shore power current limiter, etc.)



Our approach to electrics– ‘combined’ & ‘smart/internet enabled’



Combined ‘touch-screen’ control-monitors (Both Victron & Mastervolt provide single multi-purpose monitoring & control touchscreen panels for covering the main functions of the major components



EASY-VIEW 5



Control ‘GX’



Amperian interface

Smart enabled components(Both companies offer smart enablement of many components, allowing control/monitor via bluetooth connected smart phones – internet connectivity also available

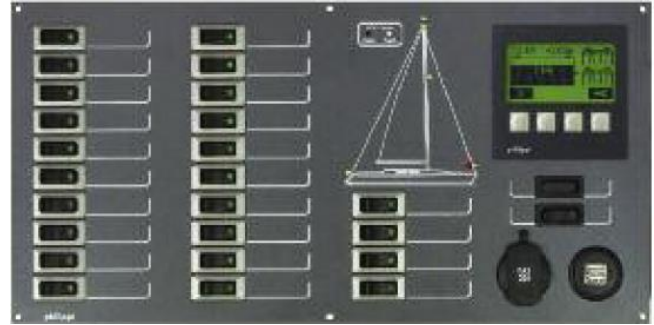


Smart solar MPPT

Our approach to electrics - variations

By default we install Victron & Votronic based electrical & monitoring systems, with 'hidden' fusing – our objective is to minimise the exposed control & electronics, and leave the systems to manage without attention from our customers.....

.....however, for customers preferring, exposed marine style 'trip-switch' electronic consoles, with a multitude of dials / monitors & controls, we can fit these at additional cost:



A subjective view of Orangeworks..... And
others !

Look and feel (example orangeworks) – generally like (1 of 8)

Generally do not like

Like



Like flush LED circular spot

Like 'continuous', but simplistic look, and dark separation at joins look



Look and feel (example orangeworks) (2 of 8)

Probably don't like metal grills, but do like these ventilation holes cut in wood

Probably don't like mosquito net frame

Prefer less wood



Do not like: (3 of 8)

Want uncovered white resin surface – no cloth

Don't like curved edging, possibly also metal finish

Probably prefer chrome finish

Probably prefer solid wood ?

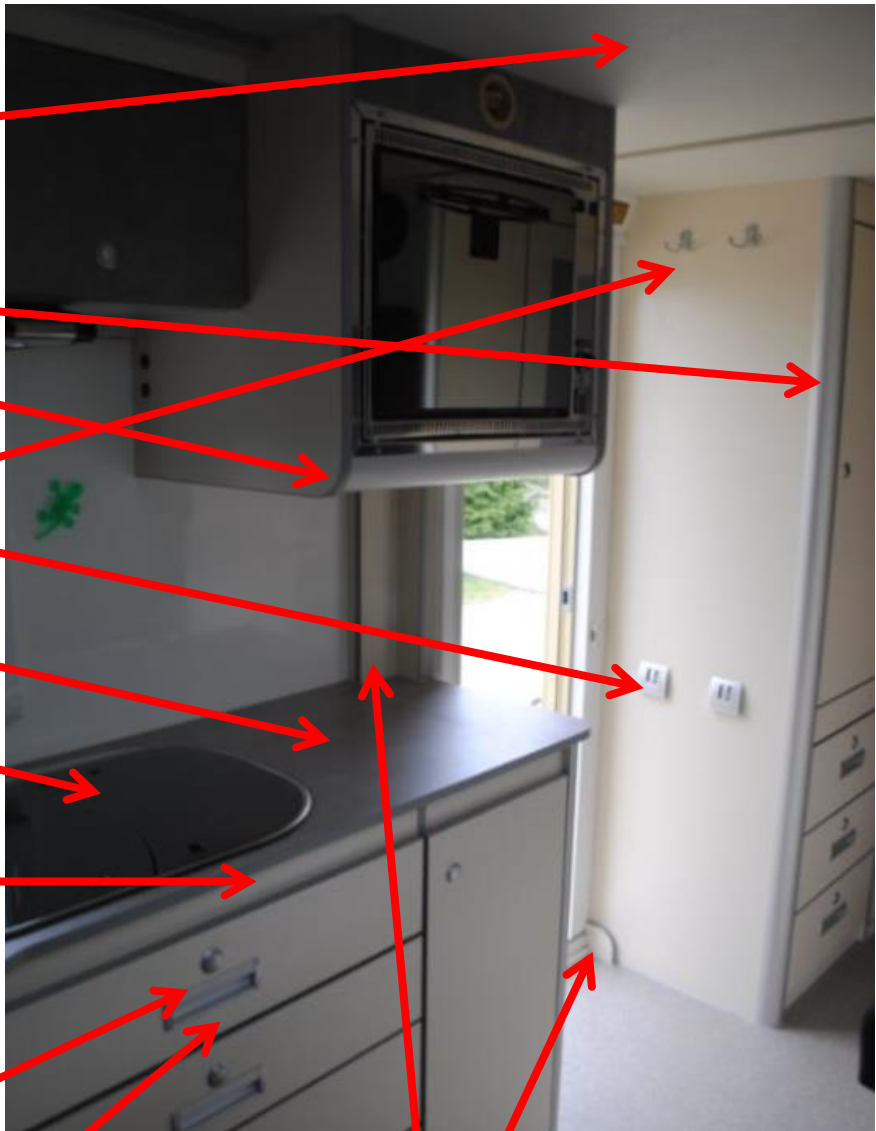
Might prefer more expensive OR deep household style sink

Don't like 'step' in wood, want front of drawers to be flush

Don't like handle plus knob...also don't like metal finish (prefer 'southco' knobs)

Possibly like deep drawers 34

Probably don't like 'odd'covering pieces



Do not like: (4 of 8)



Partitions & curves (not like)

Wood (not like)



Like



Don't Like



Do not like: (5 of 8)



Partitions & curves (not like)

Wood (not like)



Like



Don't like



Do not like: (6 of 8)

Don't like (wood grain not lining up)



Don't like

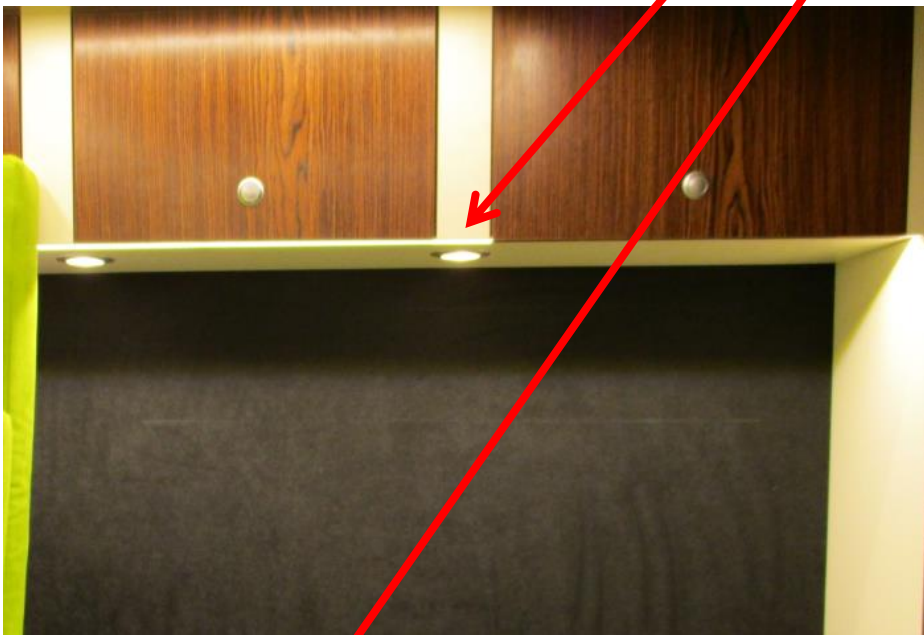
Don't like

Like



Do not like: (7 of 8)

Like ?



Look and feel (example orangeworks) – my thoughts /questions (8 of 8)

- Looks like a 'showroom kitchen' rather than a living space
- Wasted wall – always need places for small items in expedition trucks
- No deep cupboards



- Better to separate bed area from living-kitchen area
- Should be angled back for more comfort
- Wasted wall – should be wall cupboards